



REF NO.

SGD 00569

DATE:23.05.2021

## CONTAINER INSPECTION AND CARGO STUFFING SURVEY REPORT

**SHIPPER:** DIRENE PACKAGING AND BUSSINES ADVISORY SERVICES  
P. O. BOX 14303-00100  
NAIROBI, KENYA

**BUYER:** STARFRESH GLOBAL B.V  
NIEUWEZIJD VOORBURG WAL 104,  
1012SG AMSTERDAM, NETHERLANDS

**PRODUCT:** FRESH AVOCADO- HASS VARIETY  
CLASS: 1  
SIZE: 18/20/22/24.

**QUANTITY:** 5760 BOXES OF AVOCADO HASS PACKED IN 4 KGS EACH

**CONTAINER NO:** CGMU 6909186

**SEALS :** CMA-CGM H2709475/ P17591

\*\*\*\*\*

This is to certify that we surveyors from CISS GROUP, attended at POWERLIFE PACK HOUSE, Ruaka on 18<sup>th</sup>, 22<sup>nd</sup> and 23<sup>rd</sup> May 2021 to inspect and supervise the stuffing of Hass Avocados packed in cartons into the reefer container and sealed it in readiness for shipment to Malaysia.

We report our involvement and observations as follows.

Pallet No	Size	quantity	Total of No Of Cartons
1	20	115 cartons	288 cartons
	22	171 cartons	
	18	2 cartons	
2	20	288 cartons	288 cartons
3	22	288 cartons	288 cartons
4	22	288 cartons	288 cartons
5	18	288 cartons	288 cartons
6	20	288 cartons	288 cartons
7	22	288 cartons	288 cartons
8	22	288 cartons	288 cartons
9	22	288 cartons	288 cartons
10	22	288 cartons	288 cartons
11	22	288 cartons	288 cartons
12	24	288 cartons	288 cartons
13	22	288 cartons	288 cartons
14	22	288 cartons	288 cartons
15	20	288 cartons	288 cartons
16	22	288 cartons	288 cartons
17	24	288 cartons	288 cartons
18	22	288 cartons	288 cartons
19	18	288 cartons	288 cartons
20	24	45 cartons	288 cartons
	22	243 cartons	



**REF NO.**

**SGD 00569**

**DATE:23.05.2021**

**WEIGHT:** The cartons were weighed on a tested and calibrated electronic scale with the weights as follows:

ITEM	TOTAL QTY & WEIGHT
No of cartons	5760 cartons
Average gross weight per ctn (kgs)	4170 grams
Average net weight per ctn (kgs)	3990 grams
Total gross weight (kgs)	24019.20 kgs
Total net weight (kgs)	22982.40 kgs

**PACKING**

Packed in 4.00 kgs net cartons.

**MARKS:**

The marks were printed on cartons and were 100% legible as follows;

FRESH AVOCADOS

VARIETY: HASS (marked with orange sticker)

PRODUCE OF KENYA

CAT-1

STORAGE TEMP 5°C

**EMPTY CONTAINER INSPECTION**

- 1 x 40' empty reefer container was presented to us for inspection at POWERLIFE PACKHOUSE, Nairobi, Kenya.
- The Container was thoroughly inspected by our inspector externally and internally and our inspection revealed that the container had minor dents, scratches and slight bruises but was generally intact.
- Apart from the noted condition that was out of container's wear and tear, the unit was found to be clean, sound in all respects and free from odours, smell, contamination, holes, leaks, oil stain. The roof panels, side wall plates and floor boards were sound in all respects with the temperature gauge and container fans functioning well. We hereby certify suitable for marine transportation with the perishable cargo.

**CARGO CONDITION**

The abovementioned consignment were thoroughly inspected and out of the boxes checked per pallet we found to be free from foreign smell, pest, insect damage affecting flesh and stem rot, the product was also whole, clean with the origin color and shape, practically free of any visible foreign matter.

**INSPECTOR'S REMARKS**

- All the packages were loaded in good order and condition.
- Two temperature recorders were placed in the container

Size 20: 979 cartons, size 18: 578, size 22: 3582 and size 24: 621 totalling to 5760 cartons.

REF NO.

SGD 00569

DATE:23.05.2021

**PHOTO - REPORT**

**CONTAINER NUMBER: CGMU 6909186**



Packing process



Packing process



Packing process



Packing process



Cargo



Cargo



REF NO.

SGD 00569

DATE:23.05.2021



Cargo



Cagro



Weight control – 24 size



Weight control – 22 size



Weight control – 20 size



REF NO.

SGD 00569

DATE:23.05.2021



Weight control – 18 size



Carton markings.



Carton markings.



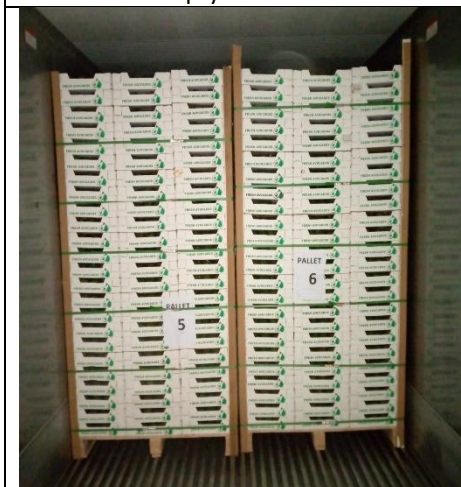
Empty container



Loading into container



Loading into container



Loading into container







REF NO.

SGD 00569

DATE:23.05.2021



Loading into container



Loading into container

Full container load

One door Closed



Shipping line seal

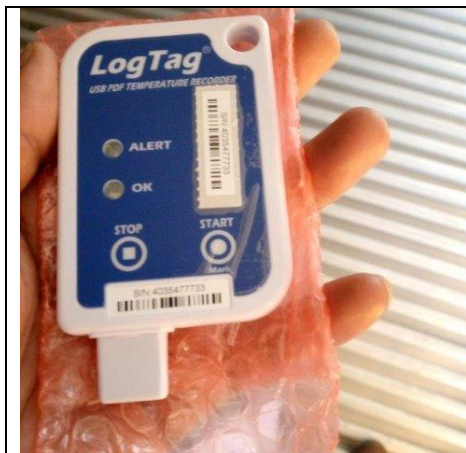
Surveyor seal

Securely closed container

REF NO.

SGD 00569

DATE:23.05.2021



Temperature recorder

Temperature condition

### CONCLUSION

“The inspection has been performed in accordance with the client’s instructions and to the best of our ability and knowledge at the time and place of inspection and within the limitations of instructions received but without prejudice and without releasing seller/ suppliers and or other parties involved from their contractual obligations”.

\*\*\*\*\*End of the report\*\*\*\*\*

CEO

Dmitriy FILIPCHYK

23.05.2021

